

# MARY'S SHRINE



*Our Lady of Holy Hostyn*



# Mary's Shrine

BY REVEREND MONSIGNOR WALTER R. ROSSI, J.C.L.



Anniversaries are significant moments. This is true in the lives of people as well as in the life of the Church. This past June marked the fortieth anniversary of the Chapel of Our Lady of Holy Hostýn, or the Czech National Chapel, since this chapel was a gift of the Czech-American Catholics to the National Shrine in 1983. Referred to as “The Pearl of Moravia” the Basilica of the Assumption is the most visited pilgrimage site in the Czech Republic where for three centuries now, pilgrims seek the intercession of Our Lady of Hostýn.

The Czech National Chapel at Mary's Shrine is more commonly known to our guests as the Confessional Chapel, as this chapel is where the Sacrament of Reconciliation is celebrated seven days a week, five hours a day. This devotional space welcomes more than 55,000 people each year to encounter the Lord in the sacrament of healing, renewal and peace.

On September 23, 2020, the Basilica of the National Shrine of the Immaculate Conception observed the 100<sup>th</sup> anniversary of the placing of the Shrine Foundation Stone. Unfortunately, the coronavirus thwarted anniversary events, but thankfully, we were able to hold the Centennial Mass, albeit with a limited attendance. National Shrine Chairman of the Board and Archbishop of Washington, then Archbishop Wilton Gregory, who was elevated to Cardinal in November of the same year, was the celebrant for the Mass.

Easter Sunday 2024 will mark the 100<sup>th</sup> anniversary of the First Public Mass being celebrated in the Crypt Church by the first director of the National Shrine, Father Bernard A. McKenna. Cardinal Wilton Gregory will be with us to commemorate this significant anniversary at the Solemn Noon Mass on Easter Sunday which will also begin a yearlong observance featuring a “Centennial Display” in Memorial Hall as well as a speaker series.

Mary's Shrine has been a work in progress for one hundred years. Construction of both the Crypt Church and Great Upper Church took



place in stages over a period of nearly forty years. Once the super structure was completed, the task of appointing and decorating the interior was undertaken. Unlike the great churches of Europe which have taken hundreds of years to

complete, some of which are still not complete, I am proud to say that in our one-hundred-year history, Mary's Shrine was brought to completion in 2017 with the mosaic decoration of the central dome of the Great Upper Church, the Trinity Dome. This was all achieved over the course of a century because of the generosity of our friends, religious and ethnic communities, as well as Catholic Charitable organizations such as the Knights of Columbus and The Catholic Daughters of the Americas.

People frequently ask me “what is the next project at the Shrine?” My answer is usually disappointing because at present, the major project is not glamorous, but practical. We are working on replacing our outdated 1950's HVAC system. I tell people that our boilers are held together with duct tape, which they are, and the entire system is not energy efficient. During the past year we have studied the best way to accomplish replacing our antiquated systems and do so with the least possible interruption to our ministry. This is going to be a multi-year, multi-million-dollar project, which you will hear about and be asked to support.

I often remind people that Mary's Shrine is not a parish church and does not belong to any diocese, and so our financial obligations are fulfilled through the generosity of our friends and visitors. With inflation hitting a forty-one-year record high in 2022 and increasing production costs, everyone is experiencing financial stress, including Mary's Shrine. That is why your gifts are so important to us and greatly appreciated.

For one hundred years now, people from every

walk of life have been coming to Mary's Shrine for prayer, the sacraments, and the intercession of the Blessed Mother. For many, Mary's Shrine is a home where they find the spiritual nourishment they need through the maternal care of Our Lady who never turns from those who entrust themselves to her.

Witnessing firsthand the thousands of devotees of Our Lady who come to Mary's Shrine each week, I cannot help but think how their faith reflects the words of the beautiful Marian prayer, the *Memorare*. Often attributed to Saint Bernard of Clairvaux and promoted by my favorite spiritual director, Saint Francis de Sales, as well as, Saint Mother Teresa of Calcutta, the

*Memorare* speaks of the affectionate, loving embrace Mary extends to all those who invoke her. This time honored invocation reminds us that we have a wonderful advocate and protector in the Blessed Virgin Mary and is a prayer which you might want to make your own:

*"Remember, O most gracious Virgin Mary, that never was it known, that anyone who fled to thy protection, implored thy help, or sought thine intercession was left unaided. Inspired by this confidence, I fly unto thee, O Virgin of virgins, my Mother, to thee do I come, before thee I stand, sinful and sorrowful. O Mother of the Word Incarnate, despise not my petitions, but, in thy mercy, hear and answer me. Amen." ❀*

## » ON THE COVER

# Our Lady of Holy Hostýn 40th Anniversary Mass

Czech American Catholics from across the United States gathered to commemorate the fortieth anniversary of the dedication of the Chapel of Our Lady of Holy Hostýn, also known as the Czech National Chapel, located in the Crypt Church of the Basilica of the National Shrine of the Immaculate Conception.

The Most Reverend Vaclav Maly, Auxiliary Bishop of the Archdiocese of Prague, traveled from the Czech Republic to Mary's Shrine to celebrate the anniversary Mass on June 11 before a standing-room-only congregation.

The Chapel of our Lady of Hostýn at Mary's Shrine also serves as the Confessional Chapel. Prominently featured in the chapel is a heroic-size bronze statue of Saint John Neumann. A native of the Czech region of Bohemia, Saint John Neumann became a priest, a bishop, a naturalized citizen of the United States, and later the first American male to be canonized. The chapel offers penitents the following prayer:



Photo by Matthew Barrick

Celebrating the Anniversary in Our Lady of Holy Hostýn Chapel

*"Give me Holiness, O Lord! Merciful Jesus, you inspired Saint John Neumann on his ordination day to pray for holiness. Through his intercession, may I obtain the same grace, particularly as I strive to draw closer to you through the Sacrament of Reconciliation. May Mary, your Mother, help me carry my cross and follow in your footsteps as Saint John Neumann did and thus attain eternal glory." ❀*

## MISSION STATEMENT

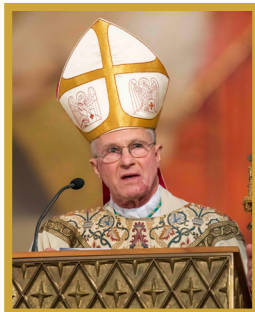
The Basilica of the National Shrine of the Immaculate Conception, a Catholic church dedicated to the patroness of our nation, is a place of worship, pilgrimage, evangelization and reconciliation. It offers visitors the occasion for a deepening conversion, a step forward in the journey to God, with Mary as the model for that journey. This monumental church, raised by Catholics of the United States because of their devotion to Mary the Mother of God, gives visibility to their faith and Catholic heritage. Mary's Shrine invites people from across the country and beyond into the saving moment of faith, hope and charity, so that they may be reconciled and transformed into living symbols of Christ's presence in the world. It is here that the faithful gather to worship God, give honor to Mary, and are sent to spread God's word wherever they go. ❀

# Military Pilgrimage & Memorial Mass



Photos by Matthew Barrick

The playing of Taps concluded the Archdiocese of the Military Services, USA, Memorial Mass at Mary's Shrine.



Archbishop Timothy Broglio

Nearly one thousand active-duty service members from the military, senior military officers, veterans, and family members, including Gold Star Mothers, attended the Archdiocese of the Military Services, USA, Pilgrimage to

participate in the sacrament of reconciliation, the recitation of the rosary, solemn vespers, and the annual Memorial Mass.

The pilgrimage, held a week before Memorial Day, was led by Archbishop Timothy Broglio of the Archdiocese of the Military Services, USA, who also serves as the president of the United States Conference of Catholic Bishops, and is a member of the National Shrine Board of Trustees.

During the Mass, which began with the posting of colors and the National Anthem, Archbishop Broglio said, "Indeed, ours is the land of the free, because the brave have made their home here, but have never hesitated to leave what



A father prays with his son during the liturgy.

is comfortable to ensure that freedom."

He continued, "Gathering in the magnificent Basilica of the National Shrine of the Immaculate Conception, we pray for the repose of the souls of the fallen, honor the living who have served or continue to serve our nation, and remember in a special way the priests who served the military, the VA, and the foreign service, who have been called back to the Father's House."

The Memorial Mass concluded solemnly with the sounding of Taps. 🇺🇸

## UPCOMING PILGRIMAGES TO MARY'S SHRINE

September 9	Indian American Catholic Association
September 10	Croatian Catholic Community
September 16	Archdiocese of Newark
September 23	First Catholic Slovak Union of USA & Canada
October 7	Diocese of Wilmington

October 14	Diocese of Patterson
October 21	Diocese of Richmond
October 28	International Day of Prayer & Fasting
December 2	Haitian Catholic Community
December 9	Archdiocese of Washington – Walk with Mary



# Mary's Shrine: A Living Mosaic of the Faithful

During the spring and summer months of 2023, thousands of pilgrims from across the United States, representing ancestries and ethnicities from around the world, flocked to Mary's Shrine to celebrate their faith and heritage at *America's Catholic Church*.

Wearing native dress, Asian and Pacific Island Catholic Americans from the Philippines, India, Indonesia, Sri Lanka, China, Bangladesh, Cambodia, Laos, Myanmar, India, Pakistan, Korea, Samoa, and Guam, gathered for their 20th annual pilgrimage on May 6.

At the pilgrimage Mass, Cardinal Wilton Gregory, the Archbishop of Washington and Chairman of the National Shrine Board of Trustees, said, "Here in Mary's Shrine, you continue to remind the entire Church that God's spirit is present here and in every corner of our world."

This sentiment was true for the Argentine American pilgrimage of Our Lady of Lujan on May 21; the Indian Catholic Mother of Miracles pilgrimage on May 27; the Filipino National Pilgrimage, honoring Our Lady of Antipolo, on



Photo by Andrew Braji, Catholic Standard

Asian and Pacific Island Procession at Mary's Shrine

June 27; as well as the National Black Catholic Congress and the African National Eucharistic Congress on July 21 and 22, respectively.

Both congresses filled Mary's Shrine with joy and spirit-filled worship. Cardinal Gregory, our nation's first African American cardinal, celebrated Mass for each of the congresses. "Your deep faith and wondrous cultural traditions," he said, "honor and inspire us as we share that One Bread that unites us in Him."

Mary's Shrine is a living mosaic of the faithful, as described by Saint John Paul II during his 1979 visit:

*"This Shrine speaks to us...with the voice of all the sons and daughters of America, who have come here from various countries... and brought with them in their hearts the same love for the Mother of God that was characteristic of their ancestors and of themselves in their native lands... [C]oming from different backgrounds of history and traditions in their own countries, [they] came together around the heart of a Mother they all had in common."* 🌹



Photo by Jaclyn Lippmann, Archdiocese of Washington

Celebrating at the African National Eucharistic Congress

## UPCOMING BASILICA BROADCASTS ON EWTN *(all times Eastern)*

ALSO LIVESTREAMED AT NATIONALSHRINE.ORG/MASS

September 5	Memorial Mass for Father Vincent Capodanno, MM	6:30pm
September 30	Dominican Rosary Pilgrimage Mass	4:30pm
November 1	Solemn Mass of All Saints	12:10pm
November 2	Choral Concert for the Commemoration of All Souls	7pm
December 8	Immaculate Conception	12:10pm
December 24	Choral Meditations on the Nativity	10pm
December 24	Solemn Mass of Christmas Eve	10:30pm
December 25	Solemn Mass of Christmas	12pm
December 25	Spanish Christmas Mass (EWTN Espanol)	2:30pm
January 7	Epiphany of the Lord	12pm
January 18	National Prayer Vigil for Life Opening Mass	5pm
January 19	National Prayer Vigil for Life Closing Mass	8am

# THE CONSTRUCTION CROSS OF 1923

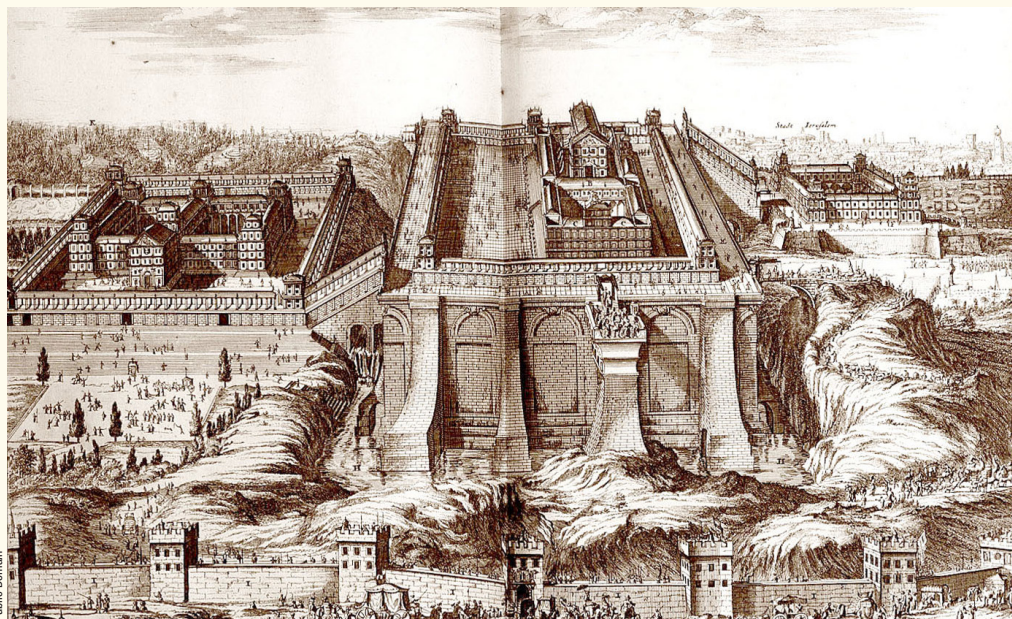
Geraldine M. Rohling, PhD, MAEd, DSG  
Archivist-Curator Emerita

To build the Holy Temple in Jerusalem God appointed Solomon, the third king of Israel and the son of David. This Holy Temple, the first Temple, was to be “God’s house,” the center of worship. In this Temple the people of God would meet and communicate with God. Years later, the prophet Habakkuk spoke of the atmosphere and the behavior within the Holy Temple: “But the LORD is in his holy temple; silence before him, all the earth!” (Habakkuk 2:20). This profound silence was an expression of respect for the presence of the LORD. Even today, the practice of being silent within a church is the legacy of this very ancient practice.

Through the catechesis of Reverend Bernard A. McKenna, the first director of the National Shrine and the personal secretary to Bishop Thomas J. Shahan, founder of the National Shrine, the workers of the Shrine approached their tasks each day as if they were building the Holy Temple in Jerusalem. In the minds of Bishop Shahan and Father McKenna the National Shrine was to be “the Holy Temple” of the Church in America, the place where “the tribes of the LORD” (Psalm 122: 4) would gather. The National Shrine was not only to be large, but the entire American hierarchy was to be able to be seated in its sanctuary — which it can do! Similarly, just as the Temple in Jerusalem was situated on a hill, the National

Shrine is situated on the high point of the rim of the basin in which downtown Washington sits; the National Shrine overlooks the capital. It is this geographic location in combination with the height of the campanile (329 ft.) that causes the National Shrine to rise *almost* to the height of the Washington Monument (554 ft. 7 in.).

In Jerusalem, to show their reverence and in recognition of the presence of God, the builders of the Temple did so in silence. Imagine! A construction project of this magnitude without the usual construction noise. With the guidance of Father McKenna, the workers of the Crypt Church went about their work in silence. Admittedly, it was not exactly as in the first Temple, as there were some sounds in the Crypt Church, but the workers refrained from unnecessary chatter and clanging of tools. Further, the stonework of the Crypt Church was hewn and prepared off-site, as with the Temple, and then brought to the Crypt Church for installation. Regarding this practice, the first published history of the National Shrine (1928) noted the following: “All visitors ... marvel at the progress, while the customary turmoil, clutter, and confusion of a building operation are conspicuously missing. ... In the years to come a much more beautiful account will be written of how the workmen on this temple in honor of the spotless Mother of the Crucified Savior did their work in the spirit of participation in a sacrament.”



First Temple



In the months following the dedication of the Foundation Stone (23 Sept 1920), the building committee of the National Shrine continued its search for a general contractor. On the feast of Our Lady of the Sacred Heart (31 May 1922) the contract was awarded to the lowest of ten bidders, Charles J. Cassidy of Washington, D.C., who was known for his many years of work in the Archdiocese of Baltimore, which at that time included Washington, D.C.

On the acreage paralleling Harewood Road the outline of the National Shrine was visualized by placing tall yellow crosses at strategic points, most notably one at the back or north end, one at the front or south end, and one where the altar of Our Lady of the Catacombs (Mary Memorial Altar) now stands. Construction began on Monday, 18 September 1922, with the ritual “turning of the first sod.” Bishop Shahan, Bishop Philip R. McDevitt of Harrisburg, Father McKenna and more than 100 members of religious communities and members of the laity gathered at the site of the National Shrine. After the recitation of prayers and during the Litany of the Saints, each person attending the event had the honor of turning a spade of soil on the spot where the Shrine now stands. (The names are provided at the end of this article.)

After almost a month of excavation, on Friday, 20 October 1922, the pouring of concrete and the laying of the steel reinforcement rods (rebar) for the floor of the Crypt Church began. This use of rebar does not alter the boast that this church was constructed in the “old world method” using only stone. The use of rebar and concrete, in one of its many developing stages, has been used in construction since ancient times. With great calculation and skill, Cassidy placed more than 200 tons of steel reinforcement in the massive concrete foundation for the *entire* National Shrine. This included not only the segments for the great arch of the Crypt Church, which would carry the weight of the main altar and the worshippers in the Great Upper Church, but also the segments for the Great Dome and the campanile. In a letter to Shrine architect Charles D. Maginnis, Bishop Shahan explained: “At its recent meeting ... the Building Committee ... decided to complete the entire foundation so that they [sic] might be of the same date and the same strength throughout” (22 Nov 1922). In his reply, Maginnis expressed his concern that this action was taken because of the “apprehension” of the committee as to “the integrity of the building” because of the “partial method of constructing

all the foundations.” Maginnis assured Shahan that there was “no advantage” to the construction of the foundation “as a single process.” Maginnis was also well-versed in business and in dealing with the Church: “We assume, however, that there are further reasons for undertaking the work at this time” (9 Dec 1922). Indeed! In its own subtle way, the building committee sought to guarantee the completion of the National Shrine.

Excavation work continued, along with the digging of trenches. Then, on 14 February 1923, construction finally reached the point where the Foundation Stone, which had been encased in wood since its dedication in 1920, was set free.



14 February 1923, the Foundation Stone

McKenna, using a popular phrase of the time, wrote, “as trade follows the flag,” construction of the National Shrine would follow the banner of the Church – the Cross. Wherever laborers dug, where concrete was poured, where the Guastavino and Pewabic tiles were installed, a cross would lead the workmen in their progress “on the beautiful house of prayer.”

In the fall of 1923, in observance of the third anniversary of the laying of the Foundation Stone, eight workers carried a large cross to the Crypt Church. On Thursday, October 4, the cross was placed against a bare brick wall in the north apse, the space that would later be filled with the mosaic of the Good Shepherd and the



Shrine Workers, 12 September 1923

# THE CONSTRUCTION CROSS OF 1923

altar of the Most Blessed Sacrament. A temporary wood overhang was added to protect it from the elements.

It is understood that the difference between a “cross” and a “crucifix” is the corpus or the body of Jesus, which is included on a crucifix. In this case, although technically a “crucifix,” Father McKenna knowingly referred to it as a “cross,” most likely because of its grand size.



BNSIC Archives

October 1923, North Apse

Just as the cross was brought into the north apse it was met by Mrs. Theresa Ganster (Rochester, NY) Supreme President of the Ladies' Auxiliary Knights of Saint John, and Miss Johanna E. White (Newport, KY), Supreme Secretary, who were standing with Father McKenna in the north apse area, while “touring” the construction site. After the cross was placed against the wall, Mrs. John Donnelly joined the group. Mrs. Donnelly was the woman responsible for the first pilgrimage to the National Shrine as part of the blessing of the site on 16 May 1920. These women and their organizations were significant benefactors of the National Shrine.

Later that afternoon, at 5:00 p.m., some fifty people, including members of the Salve Regina office, which was the promoter of the Shrine via the magazine of the same name (changed in 1959 to *Mary's Shrine*) and Christmas cards, the Very Reverend Raphael Huber, OFM Conv., superior of Saint Bonaventure Hall and professor of Church history, and several priests of the

Claretian Order, all joined Father McKenna in praying the five sorrowful mysteries of the rosary, along with the recitation of the hymn *Vexilla Regis* (Abroad the Royal Banners Fly) from the Feast of the Exaltation of the Cross, the *Memorare*, and prayers for the souls in purgatory. The service ended with Bishop Shahan giving the blessing.

Two days later, on Saturday, 6 October 1923, the administration of the Sacrament of Penance (Reconciliation) began at the northeast entrance of the Crypt Church.

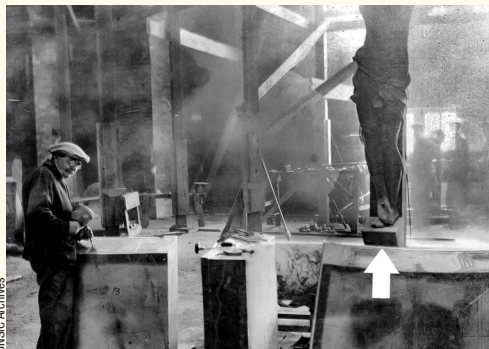


BNSIC Archives

Father McKenna in the Confessional

The cross remained in the north apse until the construction advanced, it was then moved south, reflecting the extent of the work. It had an inspiring influence on the workmen. McKenna noted that through the presence of this cross, “never has a great construction job been carried out with less confusion or noise.” Daily, amid the construction, prayers were said for the success of the project and the safety of the workers.

The Cross of 1923 was ten feet tall; the corpus six feet tall and executed in bronze by a French artist who was the winner of the Prix de Rome. His name is unknown. Each day, in the presence of this cross, the workers received a blessing. The efficacy of the blessing resulted in no injuries or deaths in the construction of the Crypt Church.



BNSIC Archives

Stoneworker and Cross 1924

This photograph from 1924 offers an appreciation of the actual size of the cross and



the atmosphere within the church among the workers. On the left is a stone worker with a wooden mallet and chisel in hand. On the right is the cross. Behind the cross, in a somewhat over-exposed corner, are three workmen.

Perhaps one of the most auspicious occasions for the viewing of the Construction Cross of 1923 was Easter Sunday, 20 April 1924. On this day, the first public Mass was offered at the National Shrine, which was still a construction site. On Easter Sunday 2024, the National Shrine will celebrate the liturgical centenary of this event. The next issue of *Mary's Shrine* will provide more details regarding the history and the coming celebration.



BNSIC Archives

19 April 1924 Easter Sunday set-up

After the Crypt Church was completed in 1926, the cross was moved to the Crypt Church entrance. It remained there until 1954, when construction began on the superstructure and the completion of the National Shrine. The original plan was for this cross “to be placed on the main altar” as its final resting place. This plan, as was often the case in the completion of the National Shrine, was changed. The Construction Cross of 1923 remains in the archives as one of the artifacts of the National Shrine.



BNSIC Archives

8 December 1924, Crypt Entrance

\*The following names were given in *Salve Regina* (Oct) 1922. The randomness of the sequencing and the inconsistent format indicates signatures on a sheet of paper.

Elizabeth R. Kirk, Mrs. Charles R. Strong, Margaret J. Graney, Mrs. Mary A. Kiely, John T. Kiely, Mrs. Catherine Breen, Alice V. Breen, Edward J. Breen, Andrew Shwartz, R. F. Keppel, Louis M. Heyl, Theresa Beck, Mrs. John W. Herold, James T. Reilly, Joseph Haas, Mrs. Sophie Walters, Mrs. Susanna Reiff, Mrs. Anna Simansick, Mrs. Joseph Noebis, Mrs. Annie Streicher, Miss Mary A. Long, Miss Maura Woulfe, Mary A. Nugent, Mrs. B. J. Czyzewski, Mrs. B. Czyzewski, John R. Dinges Sr., Joseph Schoeneman, Mrs. Frank C. Horigan, St. Aloysius Society by F. A. Weber, Secretary, Sr. M. Camilla, Sr. Beatrice Marie, Sr. M. Joseph, Sr. M. Cecilia, Sr. M. Francis, Sr. M. Lawrence, Anna R. Leahy, Mrs. Mary C. Trainor, Margaret M. Trainor, Katherine M. Walsh, Miss Sarah R. Kelly, Rosa G. Gahan, Miss. Anna C. Cunnion, Wm. P. McGrath, Peter Pydzunski, Gertrude M. Sweeney, Mrs. Mary E. Kane, Mary C. Fennell, Margaret H. Heinstedt, Sr. M. Annunziata, O.S.F., Sr. M. Perpetua, O.S.F., Sr. M. C. Borromeo, O.S.F., Sr. M. Geraldine Leehan, O.S.A., Sr. M. Rita Barlow, Sr. M. P. O'Malley, Sr. Germain Dworing, Mrs. Margaret Gilmore, Mrs. Jeane Harkins, Mrs. Wm. Waugh, Mrs. Nellie Gaffey, Mrs. John S. Naughton, Miss Ursula Naughton, Mother M. Mechilde, Sr. Mary Cletus, Mother F. Pascal, O.S.F., Sr. M. Philip Neri, Alice M. O'Halaran, Anna A. Cain, Vera E. Travers, C. L. Clabby, Thomas J. Kally, Sr. M. Basil, Sr. M. Genevieve, Sr. M. Clare, Sr. Aloysius Francis, S. Amelia Francis, Miss O'Farrell, Margaret A. Walsh, Eva M. Holley, Sr. M. Rita Barlow, Mrs. Amelia Marron, Sr. Aloysius Hudley, Sr. M. Maura McGrath, Sr. M. Johanna Glahn, O.S.F., Sr. M. Scholastica Bauman, O.S.F., Sr. M. Borromeo, C.I.M., Sr. M. Cecilia, C. I. M., Mary Ryan Cotter, Mary A. McCorrison, Sr. M. Rose, Sr. Mary Ludwina, Patrick F. O'Connell, William P. McGrath, John F. O'Donnell, Agnes McKenna, Sr. Patricia, Sr. Companion, Francis Knorski, Mrs. William E. Browne, Michael A. Chapman, Maurice A. Hughes, Philip, Agnes P., Louis J., Frank, Mrs. Mary Geyer, John O'Donnell, William Dudine, M. M. Brown, Rev. F. G. Bergs, Mrs. Rose Laurenson, Charles Claus, Nellie Conway, Marie I. Burch, Nannie B. Younger, Ethel Rooney, Miss Margaret Coffey, Mrs. Ethel Bitting, Bernadette Casey, Anna O'Keefe, Mrs. L. Glorius, Gloria Scarles, Robert Wortman, Aloysius J. Muckelbauer, Frank G. Muckelbauer, Miss Effie Bailey, Lillian Brown, Dorothy Rooney, Godfrey F. Muckelbauer, and Rose McKenna [sister of Father McKenna]. 🙏

# GIFTS FROM MARY'S SHRINE

## OUR LADY of GUADALUPE



**PORCELAIN  
CHRISTMAS ORNAMENT**  
800 3" \$19.95

## HOLY FAMILY ROSARY

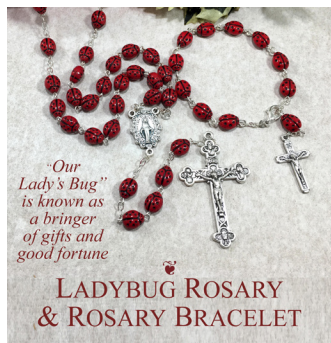
*with Relic that touched the  
Birthplace Of Jesus*



*faceted  
Clear  
Crystal  
Beads*

*beautiful 14kt  
Gold Plated  
Holy Family  
Center and  
Crucifix*

**801 Relic of The Nativity of Our  
Lord Rosary \$39.95**



*"Our  
Lady's Bug"  
is known as  
a bringer of  
gifts and  
good fortune*

**LADYBUG ROSARY  
& ROSARY BRACELET**

**802 Rosary \$59.95  
803 Bracelet \$29.95**

## HOLY SHROUD

*Devotional Fragrance*



*blend of pure olive oil from the Galilee  
region of the Holy Land, oil from  
2000-year-old trees in the Garden of  
Gethsemane and ancient fragrances  
mentioned in the gospel accounts of  
the resurrection*

**804 Shroud Fragrance 1/2 oz \$30.00**

## EMPTY CHAIR

*Christmas ORNAMENT*

*save a  
space for  
your loved  
one; just  
one empty  
chair...*



*you may  
not see  
them, but  
know, they  
will be  
there*

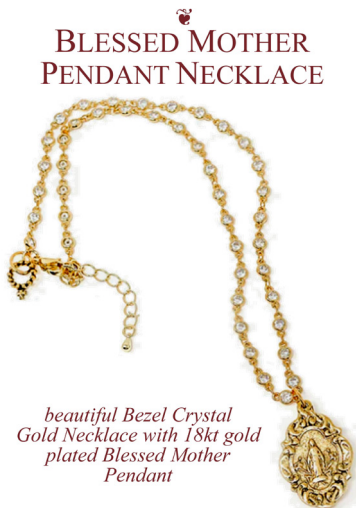
**805 3 1/2" boxed \$21.95**

## OUR LADY of GUADALUPE Christmas Cards



**806** Verse inside: "Wishing you  
Peace, Joy, and many Blessings this  
Christmas and throughout the new  
year!" **Each Box has 18 cards  
and envelopes. \$18.00**

## BLESSED MOTHER PENDANT NECKLACE



*beautiful Bezel Crystal  
Gold Necklace with 18kt gold  
plated Blessed Mother  
Pendant*

**807 18" \$75.95**



*Made in Italy*

*Vermeil  
Gold  
over  
Sterling*

**MIRACULOUS MEDAL  
ROSARY BRACELET**

**808 24kt gold plated over  
sterling 7". \$36.95**

## ICON CHRISTMAS ORNAMENTS

*Made in  
Ukraine*



*Nativity  
with  
Angels*

*Virgin  
with  
Child*

*Nativity*

**3 1/2" diameter \$14.95 ea  
809 Nativity with Angels  
810 Nativity  
811 Virgin with Child**

Please visit our website at  
[nationalshrineshops.com](http://nationalshrineshops.com)

*All proceeds from your purchases of Mary's Shrine directly support the mission and ministry of the Basilica. Thank you for your support!*

**USE ATTACHED ORDER FORM OR CALL TOLL-FREE 1-800-333-4411**



# GIFTS FROM MARY'S SHRINE



**812 2024 Mary and the Saints Calendar** contains special feasts, marked with days of Fasting, special Saints Days, and the Sundays of the Liturgical Year for both the Ordinary and Extraordinary Calendars. **\$16.95**

## BABY JESUS in Embroidered Pouch



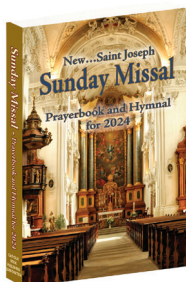
A treasure for Christmas  
**815 2 1/2" \$9.95**



## Celtic Cross Advent Wreath and Candles

**818** Celebrate the Advent Season with this Celtic Cross **9" \$29.95**

**819** Set of 4 tapers in traditional colors, 3 purple and 1 pink. Boxed (not shown) **\$9.95**



**821 2024 St. Joseph Sunday Missal** is a complete annual Sunday Missal with each Sunday's Prayers, Readings, Responses for the calendar year and the Masses for Holy Days. **\$5.95**

## Ghirelli HOLY CHRISTMAS ROSARY

Made in Italy *the joyous spirit of Christmas comes with this beautiful Rosary*



*Madonna and Child Center with Clear Crystals, Swirled Glass Pearl and Christmas colored Beads* *Polished 14K Gold Plated*

**813 \$99.95**

## the NATIVITY Christmas Cards



**816** Verse inside: "Wising you peace, joy and many blessings this Christmas and all through the new year." **Each Box has 18 cards and envelopes. \$18.00**

## SONG of ANGELS Christmas Cards



**814** Verse inside: "In His birth we are blessed, in His name we rejoice at Christmas and all through the year." **Each Box has 18 cards and envelopes. \$18.00**

## BLESSING BELL CHRISTMAS ORNAMENT



*ring on Christmas morning and remember His blessings*

**817 4" gift boxed \$9.95**

## HOLY FAMILY Glass Holy Water Bottle

Made in Italy



**820 \$16.95**

## PORCELAIN CHRISTMAS ORNAMENTS from paintings of the Masters



*Madonna & Child*

*Song of Angels*



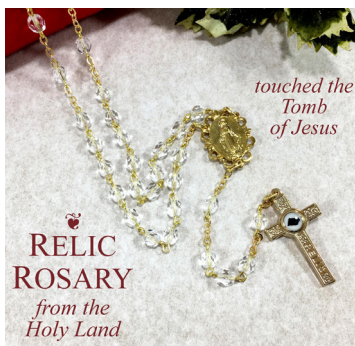
*Nativity*

**3 1/2" diameter \$19.95 ea**

**823** Madonna and Child

**824** Nativity

**825** Song of Angels



*touched the Tomb of Jesus*

**RELIC ROSARY** from the Holy Land

**822 \$45.95**

# GIFTS FROM MARY'S SHRINE



*Our Lady  
pray for  
us*

*hand made  
in Lourdes,  
France*

**826 \$89.95**

*Lourdes  
Miraculous  
MARY  
NECKLACE*



**CRUCIFIX PENDANT  
NECKLACE**



*14kt  
Gold Dipped  
with 4mm  
Faux Pearl  
Chain*

**827 18" Chain \$59.95**



**SCAPULAR  
with  
Pearls  
BRACELET**

*beautiful  
14K Gold Plated  
Double Strand*

**828 \$24.95**

**BLESSED MOTHER  
BRACELET**



*14mm  
semiprecious  
gemstones*

*beautiful  
blue agate beads  
with an ornate  
Blessed Mother  
medal*

**829 stretch \$75.95**

**SAINTS DEVOTIONAL OILS**

*St Michael Our Lady of Guadalupe St Anthony*



*Frankincense  
Rose of Sharon  
Lily of the  
Valley*

**830 St Michael**

**831 Our Lady of Guadalupe**

**832 St Anthony \$9.95ea**

**SAINT MICHAEL  
Pewter & Gold Statue**



*Angel of strength, courage  
and protection*

**833 Saint Michael 9" \$99.95**

**1000 pc Family Puzzle  
STAINED GLASS NATIVITY**



**834 \$19.95**

**OUR LADY of MT. CARMEL  
SCAPULAR**

*Mary  
appeared  
to St. Simon in  
a vision, held out  
a scapular and said to  
him,  
'he who dies in  
this will not  
suffer eternal  
fire'*



**835 \$14.95**

**MADONNA  
of the STREETS  
Christmas Cards**



**844 Verse inside: "May  
the Peace and Joy of the  
newborn King be with you this  
Christmas!" Each Box has 18  
cards and envelopes. \$18.00**

**Immaculate Waters  
Lotions & Soaps**



Please visit our website at  
[nationalshrineshops.com](http://nationalshrineshops.com)



Follow the words of Our Lady to St. Bernadette: "Go to the spring, drink of it and wash yourself there."

**836 Lavender Bar Soap 4oz \$6.95**

**837 Lavender Hand and Body Lotion 8oz \$12.95**

**838 Lavender Liquid Soap 8oz \$12.95**

**839 Rose Bar Soap 4oz \$6.95**

**840 Rose Hand and Body Lotion 8oz \$12.95**

**841 Rose Liquid Soap 8oz \$12.95**

**842 Rose Spritzer 4oz \$9.95**

**843 Lavender Spritzer 4oz \$9.95**



# GIFTS FROM MARY'S SHRINE



845 Rosary \$99.95

846 Rosary Bracelet \$29.95

## MIRACULOUS MEDAL NECKLACES



847 Sterling Silver \$79.95 18"

848 Gold over Sterling \$79.95 18"

## L'INNOCENCE Christmas Cards



849 Verse inside: "May this Christmas season fill you with peace and touch you with God's Love." Each Box has 18 cards and envelopes. \$18.00

## HOLY FAMILY ICON



850 Made in Italy 4" x 6" \$39.95

## SWEET HOLY FAMILY Wooden ORNAMENT



851 3" x 6" \$6.95 \$6.95



852 1 1/4" cross on 18" chain, each one is unique \$59.95



853 \$14.95

## OLIVE WOOD CROSS

for comfort,  
with Relic that  
touched the  
tomb of  
Jesus

Please visit our website at [nationalshrineshops.com](http://nationalshrineshops.com)

## INCENSE and BRASS CROSS BURNER

Beautiful Church Scents

Kings  
Frankincense

~  
Johannes  
Tuscany Rose

~  
Gloria



Boxed Incense 1.2 oz with charcoal and Burner

856 Frankincense Incense \$19.95

857 Rose Incense \$19.95

858 Gloria Incense \$19.95

859 Brass Incense Burner 5" \$49.95

## Scapular Necklace & Bracelet

Mary appeared to St. Simon in a vision, held out a scapular and said to him, 'he who dies in this will not suffer eternal fire'.

854 14kt gold plated necklace 20" \$29.95

855 14kt gold plated Bracelet fits up to 7 1/2" \$21.95

All proceeds from your purchases of Mary's Shrine directly support the mission and ministry of the Basilica. Thank you for your support!

VISIT OUR NATIONAL SHRINE SHOPS WEBSITE AT [WWW.NATIONALSHRINESHOPS.COM](http://WWW.NATIONALSHRINESHOPS.COM)

# GIFTS FROM MARY'S SHRINE

## CHRISTMAS SWEATER Adult & Kids SOCKS



patterns represent the Star of Bethlehem that guided the Three Wisemen To the birthplace of Jesus

**860 Kids \$12.95**  
**861 Adults \$15.95**

## CATHOLIC DOCTRINE Playing Cards



by  
Father William  
Armstrong

**864 \$7.95**

with original art  
by the Author

## Letters from FATHER CHRISTMAS

by J.R.R. Tolkien  
each December an envelope  
bearing a stamp from the  
North Pole would arrive for  
J.R.R. Tolkien's Children  
and inside would be a  
letter in a strange hand  
writing with a beautiful  
drawing or painting

**869 \$25.00**

## Golf with the Saints St Anthony Golf balls



Patron Saint  
of Lost Items

**876 \$16.95**



## KNEELING SANTA Christmas Ornament



That at the name of Jesus every knee  
should bow - Philippians 2:20

**865 3" \$19.95**

## Tiny Bell NATIVITY



a truly precious Christmas gift

**862 \$12.95**



**863 Mug 15oz \$12.95**

## Christmas Card Fun with the Nuns



Nuns Pulling Sled  
Inside verse:  
"Merry Christmas"



Nuns Skating  
Inside verse:  
"Merry Christmas and  
Happy New Year"



Nuns Skiing  
Inside verse:  
"Merry Christmas  
and  
Happy New Year"

by Margaret Loxton

**6x4 cards in pack of 10 \$12.95 ea**

**866 Nuns Pulling Sled**

**867 Nuns Skating**

**868 Nuns Skiing**

## Stemless Wine Glass



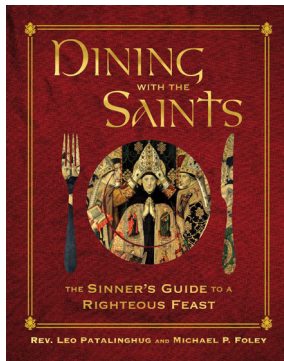
**870 15oz \$14.95**



## Saintly Socks

**871 St Joseph**  
**872 St Francis**  
**873 St Therese**

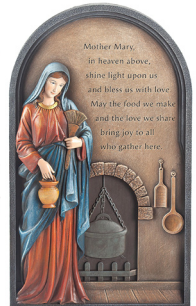
**874 St Michael**  
**875 St Nicholas**  
**\$15.95ea**



**877 \$39.95**

## Kitchen MADONNA Prayer Plaque

Mother Mary, in  
Heaven above,  
shine light upon us  
and bless us with  
love. May the food  
we make and the  
love we share  
bring joy to all  
who gather here.



**878 Plaque 9" \$45.95**

Please visit our website at  
[nationalshrineshops.com](http://nationalshrineshops.com)



# GIFTS FROM MARY'S SHRINE

## NATIVITA Christmas Cards



**879** Verse inside: "May the blessings of Christ be with you now and throughout the New Year. Merry Christmas!" **Each Box has 18 cards and envelopes. \$18.00**



handmade  
in  
Bethlehem

## One decade OLIVE WOOD ROSARY with COMFORT CROSS

beautiful to see  
and comforting  
to hold

**880 \$7.95**



**881 2024 Angels Wall Calendar** contains special feasts, marked with days of Fasting, special Saints Days, and the Sundays of the Liturgical Year for both the Ordinary and Extraordinary Calendars. **\$16.95**



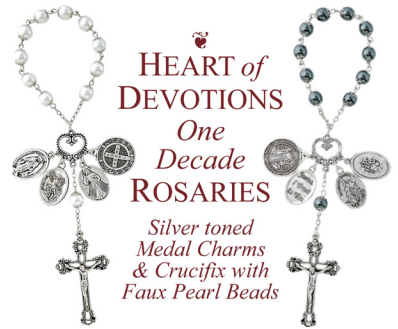
## MOTHER of PEARL beautiful and protective

Scapular Necklace & Bracelet  
*Sacred Heart and Our Lady of Mt Carmel*

**882 Scapular Necklace \$39.95**  
**883 Scapular Bracelet- adjustable \$34.95**



**884 Tiny Glass Holy  
Water Bottle \$7.95**



## HEART of DEVOTIONS One Decade ROSARIES

Silver toned  
Medal Charms  
& Crucifix with  
Faux Pearl Beads

**885 White \$9.95**

**886 Grey \$9.95**

## Olive Wood COMFORTING ANGEL

Guardian Angel to  
comfort, give you  
strength, hope, and  
carry your prayers  
to Heaven



Hand Made in Bethlehem

**887 \$6.95**



## MADONNA & CHILD Christmas Cards



**891** Verse inside: "May you keep in your heart the miracle of Christmas today and forever." **Each Box has 18 cards and envelopes. \$18.00**



## SCAPULAR Bracelet & Necklace

Mary appeared to St. Simon in a vision, held out a scapular and said to him, ' he who dies in this will not suffer eternal fire'

**888 Scapular Bracelet \$21.95**  
**889 Scapular Necklace \$29.95**



**890 Miraculous Medal  
Key Ring \$5.95**

Please visit our website at  
[nationalshrineshops.com](http://nationalshrineshops.com)

All proceeds from your purchases of Mary's Shrine directly support the mission and ministry of the Basilica. Thank you for your support!

VISIT OUR NATIONAL SHRINE SHOPS WEBSITE AT [WWW.NATIONALSHRINESHOPS.COM](http://WWW.NATIONALSHRINESHOPS.COM)

# LEAVING A LEGACY REMEMBERING THE NATIONAL SHRINE IN YOUR WILL

For many, charitable giving is an act of faith grounded in confidence in God's abundance and motivated by a desire to create additional resources for accomplishing God's work.

Leaving a legacy gift to the Basilica of the National Shrine of the Immaculate Conception offers the opportunity to pass on not only your assets but also the values that have guided your life.

Remembering the National Shrine in your estate planning is a wonderful way to put your values into action, ensuring that Mary's House is maintained for future generations as a center of worship and devotion as a personal legacy.

To remember the Basilica of the National Shrine in your will, you may contact your attorney or financial advisor for assistance in making a bequest. Or, you may simply include the following in your will:

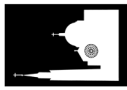
*I give, devise, and bequeath to the Basilica of the National Shrine of the Immaculate Conception, a body corporate of the District of Columbia, and located in Washington, D.C., (the sum of \_\_\_\_\_) or (\_\_\_ % of rest residue, and remainder of my estate) or (\_\_\_ shares of \_\_\_\_\_) or all my right, title and interest in the following described property \_\_\_\_\_).*

Please feel free to contact the Basilica at 202-526-8300 if we can provide you with further information or assistance.

Thank you for your prayerful consideration and continued support of Mary's Shrine.

Nonprofit Organization  
U.S. Postage  
**PAID**  
Basilica of the National Shrine  
of the Immaculate Conception

**BASILICA OF THE NATIONAL SHRINE  
OF THE IMMACULATE CONCEPTION**  
400 Michigan Avenue NE  
Washington, DC 20017



**Please visit [nationalshrine.org](http://nationalshrine.org) for the latest news and information.**



\*\*\*\*\*  
**MARY'S  
SHRINE**  
\*\*\*\*\*

*A publication of the Basilica of the National Shrine of the Immaculate Conception*

Reverend Monsignor Walter R. Rossi  
RECTOR

Reverend Monsignor Vito A. Buonanno  
DIRECTOR OF PILGRIMAGES

Reverend Ismael N. Ayala  
DIRECTOR OF LITURGY

Reverend Raymond A. Lebrun, O.M.I.  
SPIRITUAL DIRECTOR

Jacquelyn Hayes  
DIRECTOR OF COMMUNICATIONS

**Location**  
400 Michigan Avenue, NE  
Washington, DC 20017  
Tel: 202-526-8300  
[info@nationalshrine.org](mailto:info@nationalshrine.org)  
[www.nationalshrine.org](http://www.nationalshrine.org)

**Shrine Hours**  
6 am - 6 pm

**Sunday Masses**  
4:30 pm (Saturday Vigil)  
7:30 am, 9 am, 10:30 am  
\*12 noon (Solemn Mass with Choir)  
\*2:30 pm (Spanish)  
4:30 pm

**Sunday Confessions**  
10 am - 12 noon  
1:15 pm - 2:15 pm (Spanish)  
2:30 pm - 4:30 pm

**Monday-Friday Masses**  
7 am, 8 am, 12:10 pm, 5:15 pm

**Saturday Masses**  
7 am, 8 am, 12:10 pm, 4:30 pm (Vigil)

**Monday-Saturday Confessions**  
9 am - 12 noon  
3 pm - 5 pm

**Holy Days**  
*Please contact the Basilica for Holy Day Schedules.*

**Guided Tours**  
Monday - Saturday  
9 am, 10 am, 11 am, 1 pm, 2 pm, 3 pm  
No Guided Tours on Sunday.

**Gift Shop & Bookstore**  
Open Daily 9 am - 5 pm  
(Closed Thanksgiving Day)  
Shop Online Anytime at  
[www.nationalshrineshops.com](http://www.nationalshrineshops.com)

\*Livestreamed at [www.nationalshrine.org/mass](http://www.nationalshrine.org/mass)

© 2023 Basilica of the National Shrine of the Immaculate Conception

Cover photo by Matthew Barrick